

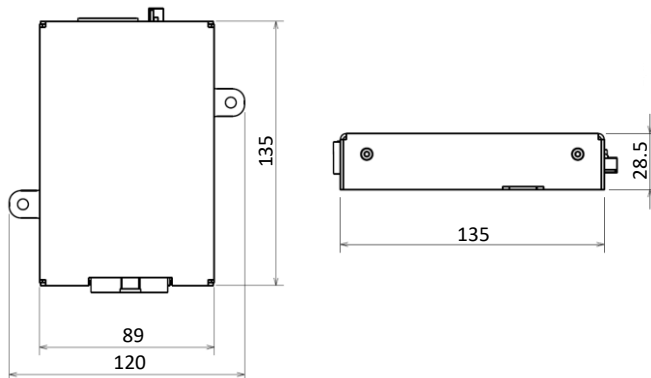


SMART KEY SYSTEM



THROUGH THE DEVELOPMENT OF OUR ULTRA-HIGH PERFORMANCE HYPERCAR PROJECTS, WE KNOW THE ELECTRONICS AND CONTROL UNITS IN A VEHICLE ARE JUST AS CRITICAL AS THE DRIVETRAIN COMPONENTS THEMSELVES.

This is why we provide some of the most technologically advanced electronics on the market, all developed in-house by our engineering experts.





Our Smart Key System consists of 2 functional units: the Smart Key Fob (SKF_001) and Smart Key Module (SKM_001) that communicate through radio frequency signal (RF). This system uses secure crypto communication on all levels of communication (RF, PEPS and CAN).

BASIC SPECIFICATIONS

COMPONENT	SKM_001
INPUTS	2 x digital inputs 3 x digital inputs with system wake up function 1 x RF antenna connections
OUTPUTS	2 x H-bridge 1 x system FAULT signal 8 x LF antenna connections
COMMUNICATION	3 x CAN bus 1 x LIN bus
PROCESSOR	NXP MCP5744 safety MCU

MAIN FEATURES

- › **RKE** : REMOTE KEY ENTRY
- › **PEPS** : PROVIDES ACCESS FUNCTIONS WITHOUT ACTIVATING THE KEY FOB
 - › PASSIVE ENTRY
 - › PASSIVE START/STOP
 - › PASSIVE LOCK
- › **IMMOBILIZER** : EMERGENCY PROCEDURE IN CASE PASSIVE START DOES NOT WORK PROPERLY OR THE SKF'S BATTERY IS EMPTY



Our Smart Key System consists of 2 functional units: the Smart Key Fob (SKF_001) and Smart Key Module (SKM_001) that communicate through radio frequency signal (RF). This system uses secure crypto communication on all levels of communication (RF, PEPS and CAN).

BASIC SPECIFICATIONS

COMPONENT	SKF_001
ACTIVE COMPONENTS	Microcontroller: Integrated RF transmitter Integrated LF3 channel receiver Integrated secure crypto module On-PCB external oscillator Data storage: SPI bus EEPROM memory 3-axe gyro RF transmitter: can be set inside (850-928 Mhz) frequencies LF transponder: 125kHz carrier 1 x PCB loop RF antenna 1 x 3-Axes transponder 3DCoil LF antenna
COMMUNICATION FREQUENCIES	
ANTENNAS	
INTERFACE	6 x tactile switch

MAIN FEATURES

- › **RKE** : REMOTE KEY ENTRY
- › **PEPS** : PROVIDES ACCESS FUNCTIONS WITHOUT ACTIVATING THE KEY FOB
 - › PASSIVE ENTRY
 - › PASSIVE START/STOP
 - › PASSIVE LOCK
- › **IMMOBILIZER** : EMERGENCY PROCEDURE IN CASE PASSIVE START DOES NOT WORK PROPERLY OR THE SKF'S BATTERY IS EMPTY

